

Louise Craig Scholarship Committee

Purpose/Mission Statement

The Scholarship Fund Club was organized in 1955 by Rev. M. C. Swann, Sr., the minister. The purpose of the club was to stimulate a desire for scholarship proficiency, church loyalty, and civic service in the sons and daughters of Bethel A.M.E. Church.

SCHOLARSHIP CRITERIA

TIER 1 Scholarship Recipient

Member of Bethel for **TWO** or more years

Actively participating in **ONE** youth Ministry (Usher Board, YPD, Youth Choir, Debutante & Masters, Scouts, Dance Ministry, etc.)

TIER 2 Scholarship Recipient

Member of Bethel for **TWO** or more years

Actively participating in **TWO** or more youth ministries (Usher Board, YPD, Youth Choir, Debutante & Masters, Scouts, Dance Ministry, etc.)

TIER 3 Scholarship Recipient

Member of Bethel for **TWO** or more years

Actively participating in **TWO** or more youth ministries (Usher Board, YPD, Youth Choir, Debutante and Masters, Scouts, Dance Ministry, etc.)

Serving in a leadership role in a Youth Ministry (President, VP, Treasurer, Secretary, etc.)

Attend Sunday School at least once a month (confirmed by Sunday School Superintendent)

WHAT IS ACTIVE PARTICIPATION

Active participation is described as attending meetings/ practices/ performances regularly and being in good financial standing within the organization. A member's level of involvement must be confirmed by the leader of that organization.

The scholarships are one-time awards and are not intended to cover the applicant's full cost of his/her higher education.

Scholarships are granted during the second semester of applicant's enrollment in the school of his/her choice.

Recipient must furnish **official verification** from the school verifying his/her second semester enrollment. This official written communication on the school's letterhead stationery should be sent to the Louise Craig Scholarship Committee, Bethel AME Church, 200 Regan Street, Greensboro, NC 27401. (Official means a person in an administrative position such as an admissions officer, dean, counselor, adviser.)

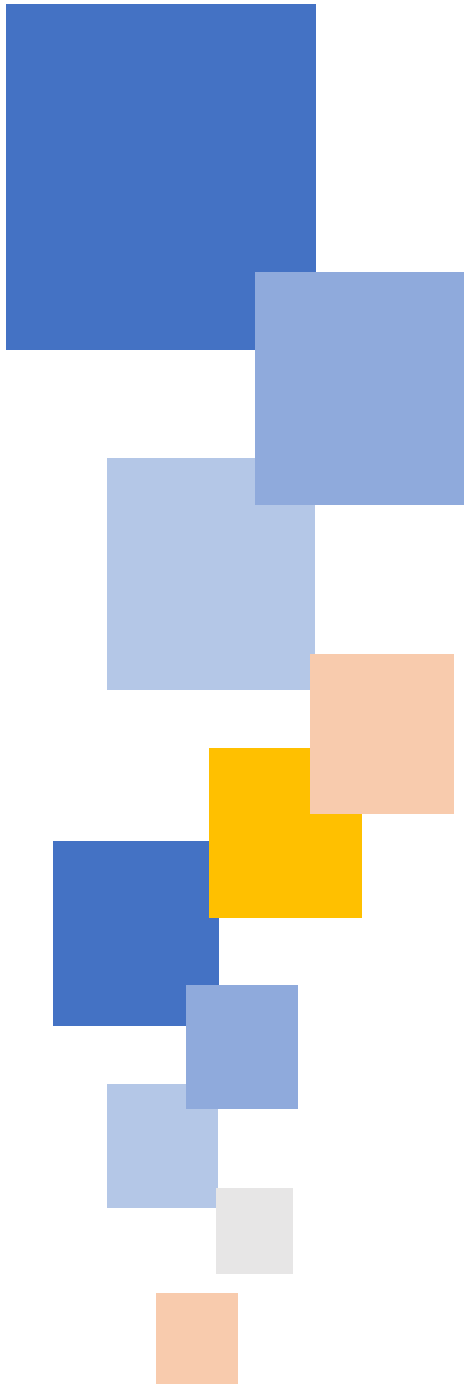
The scholarship award will be determined by the amount the Louise Craig Scholarship Committee recommends is prudent to be awarded for each Tier based on availability of funds.

(Scholarship amounts may be modified based on the number of applicants.)

APPLICATIONS may be secured from the Chairman or Secretary of the Scholarship Committee.

Visit the church website for additional information: <https://www.bethelamegsb.org>

* * * * *



“Delight yourself in the LORD, and he will give you the desires of your heart.”
Psalms 37:4

Published October 2019

**THE LOUISE CRAIG
SCHOLARSHIP COMMITTEE**

Bethel A.M.E Church
200 Regan Street
Greensboro, NC 27401



**SCHOLARSHIP
POLICIES AND GUIDELINES**